



IT Systems, Software, and Artificial Intelligence

Brief Industrial Profile of the West Palatinate Region



ZukunftsRegion
Westpfalz



Foreword

Dear readers,

Rhineland-Palatinate is a forward-looking industrial location with a business-friendly climate. We provide the critical hard and soft location factors, which are equally as attractive to companies, as they are to employees and investors.

With its position in the middle of Europe, right next to important sales markets, our federal state is attractive for SMEs, as well as for industry. Companies from many sectors collaborate very closely in many cases with scientific institutions. Nothing is too far away. On top of that, there is the family-friendly and pleasant surrounding area with a high quality of life.

The West Palatinate's position, bordering Germany, France and Benelux, with its international transport connections and a very good supply of skilled workers make the region attractive for many companies.

With a high density of universities, research institutes and scientific facilities in the relevant topic areas, the West Palatinate is a well-developed technological location .

The West Palatinate is eager to welcome you!



Dr. Volker Wissing
*Minister for Economics, Transportation, Agriculture and Viticulture
and Deputy Minister President of the State of Rhineland-Palatinate*

The Federal State of Rhineland-Palatinate

Rhineland-Palatinate is situated in Germany's dynamic southwest, in the immediate vicinity of France, Belgium and Luxembourg. It also boasts excellent connections for anyone wanting to develop worldwide business relationships, thanks to the neighbouring Rhine-Main area being the European economic centre that it is.

Position in Europe

Area:

19.854 km²

Inhabitants:

4.1 million

Important industry sectors:

- Chemistry and pharmacy
- Healthcare
- Automotive industry
- Metal processing
- Mechanical engineering
- Nutrition



percent of all companies in the Rhineland-Palatinate are **medium-sized**. Thanks to their flexibility, they react quickly to global challenges.



Every seventh person employed in Rhineland-Palatinate works in a **high-tech** field. Because of this, the federal state is in national top position.

An excellent business location ...

Rhineland-Palatinate has rapid transportation routes by land, by water and by air. This saves companies time and money. The proximity to the hub that is Frankfurt airport, efficient motorways, the European high-speed train network and the position on the Rhine, the most important waterway in Europe, all collectively form the backbone of an exceptionally well-connected transport system.

The innovative, overwhelmingly middle-sized economy cooperates closely with the sciences and is internationally in the lead. The combination of global players like BASF, Daimler, Schott and Boehringer Ingelheim with middle-sized world market leaders is unique.

The attractiveness of the federal state in terms of education is based on more than 40 research institutes and universities, as well as a first degree free-of charge. Both the university education and dual training system with well-educated specialists and master craftsmen are renowned worldwide.

And finally, a word on mentality: Rhineland-Palatinate are cosmopolitan, sincere and uncomplicated. Visitors appreciate the hospitality of the Rhineland-Palatinate; with its abundant culture and delights, it is a favourite holiday region for many people from near and far.



“Continuous economic growth, a high export quote, as well as exceptionally attractive housing and quality of life: With its healthy medium-scale economic structures, the Rhineland-Palatinate is one of Germany’s leading business locations.”

Daniela Schmitt
State Secretary of the Ministry for Economics, Transportation, Agriculture and Viticulture

... and a perfect environment for innovations.

The Rhineland-Palatinate offers world-class quality in particularly promising fields of business and science. Therefore, the state government focuses on the areas in which the competitive advantages are greatest and unique selling points are particularly pronounced. With a view to leveraging the opportunities that come from global mega trends, as well as the newest market-leading and technological developments.

The identified potential areas are consistently promoted, e.g. by:

- targeted strengthening and promotion of infrastructure and competence development in research and development,
- support for ambitious research and technology projects,
- creating the best starting conditions for innovative start-ups,
- ensuring access to new research for all companies, as well as
- the offer of research, innovation and technology promotion from a single source.



In the Germany-wide **satisfaction ranking of the founders**, Rhineland-Palatinate is in second place among the 16 federal states



percent **export quote** in Rhineland-Palatinate in 2018 (Germany 50.3 %)

The West Palatinate

The West Palatinate region is situated in the Southwest of Germany in the federal state of Rhineland-Palatinate. Besides the regional centre of Kaiserslautern, it includes the independent cities of Pirmasens and Zweibrücken, as well as the districts Kaiserslautern, Südwestpfalz, Kusel and Donnersberg. It borders France in the south, Saarland in the west, the Rhine-Main area in the northeast and the Rhine-Neckar metropolitan region to the east. In comparison to its neighbours, the West Palatinate region offers companies particularly attractive locations in terms of price and accessibility, favourable conditions for investors and for employees, employment in future-oriented industries and an environment with a high quality of life.



520.000

Around 520,000 **people** live in the West Palatinate overall. Practically though, it is closer to 570,000, because...



50.000

Americans live in and around Kaiserslautern ("K-Town") as the biggest **American community** outside of the USA.



132

Citizens from 132 **various nations** live and work in West Palatinate.

Traffic and accessibility

Whether on one of the numerous motorways that cross the region or the good local and long-distance rail connections, the West Palatinate can always be quickly and easily reached. Special feature: from Kaiserslautern, the metropolis of Paris is only about 150 minutes away by train. More importantly: the biggest German airport, the international hub Frankfurt/Main may be reached by car in under an hour. More regional airports in the area round out this enticing offer.

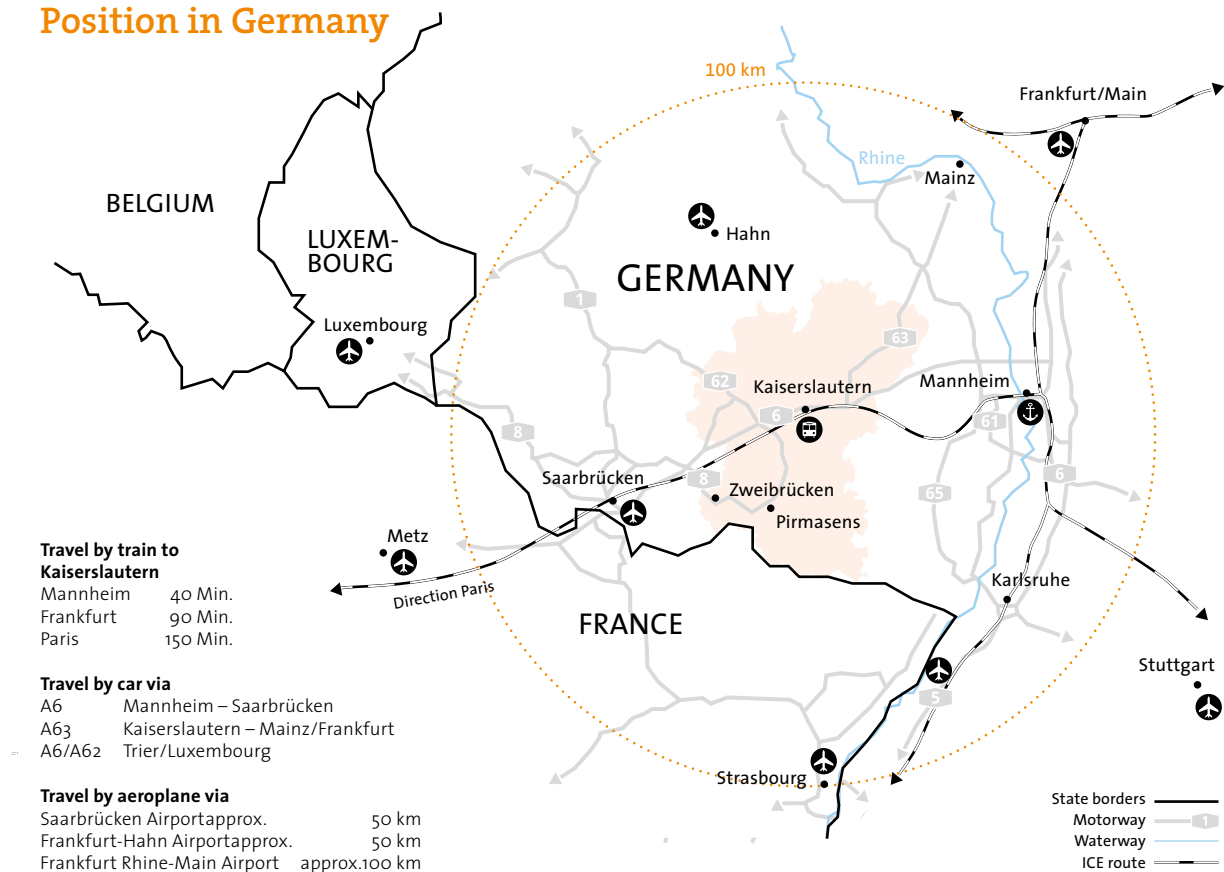
Labour market, population

In recent years, the number of employees subject to social security contributions has increased significantly to around 165,000 in 2018. At the same time, the number of unemployed people has continued to decrease. Due to demographic change, it was forecast that the

Western Palatinate would experience a noticeable population decline in the coming years. In recent decades, however, especially in the centres, things have developed much more favourably than previously feared.

The official population statistics don't even include the some 50,000 Americans, who have been present in the Western Palatinate for 70 years, as well as members of NATO countries and their families. The US-American community is the largest outside the USA, which is reflected in a traditionally high level of English language proficiency among the local population. This presence, the large number of foreign students, foreign companies and their employees and the border with France with its numerous cross-border commuters all make the Western Palatinate an especially international region.

Position in Germany



international **airports**
less than a two-hour drive away.



An estimated 20 million people live within a two-hour drive around the West **Palatinate**.



Economy and Technology

The West Palatinate has traditionally been rooted in industrial production. Machine and apparatus construction, automotive suppliers, footwear and leather goods, chemicals, plastics and last but not least, building materials still characterise the economic structure of the region to this day, which itself is strongly supported by SMEs. The US military is also a significant economic factor.

Based on its industrial roots, the West Palatinate's economy has developed in recent decades into a strongly export-oriented, SME-influenced research and development economy with innovative production and a specialisation in IT.

The conversion of formerly military and industrial areas or areas used by the railway has also played a special part in this transformation. There, with the support of the state, innovative new uses for these areas have emerged. The diversity of the economic structure together with the cooperation of the players in industry-specific networks has left the regional economy unscathed by international turbulence. Agriculture also avails itself of modern production methods, is partnered with modern agricultural machinery manufacturers (John Deere Development Centre), uses state-of-the-art IT technologies and also contributes to the generation of renewable energy in the West Palatinate.



The region boasts 21 **scientific institutions** in relation to automotive, electrical and production engineering, electro mobility materials, as well as IT / AI.



With the Smart Factory and the SME 4.0 Competency Centre, the West Palatinate is one of Germany's leading regions in **Industry 4.0**.



When it comes to complex research projects, people are increasingly turning to networks or so-called “clusters” in which cooperation partners from science and industry pool their different competencies. An example of this is the Science & Innovation Alliance Kaiserslautern (SIAK)



Research foci at the Technical University of Kaiserslautern include innovative vehicle and mobility concepts, intelligent driving and operating comfort systems, as well as energy-efficient vehicles and assistance systems, among others.



A dense network of first-class research facilities ensures that research and development work has practical relevance, providing the transfer points where results are put into practice.



The plastics industry based in the West Palatinate is an impressive example of the ongoing adaptability of our companies to changing conditions.

Education, Research & Innovation

The competitiveness of the region is based on an innovative and flexible economy, but above all on a strong technological orientation in science, research and education. Several renowned research institutes in the field of information and communication technology are represented at the site, including two Fraunhofer Institutes, a Max Planck Institute and the German Research Centre for Artificial Intelligence (DFKI).

The Technical University and the University of Applied Sciences Kaiserslautern with its three locations in the region, as well as numerous vocational schools make the West Palatinate a priority region for training com-

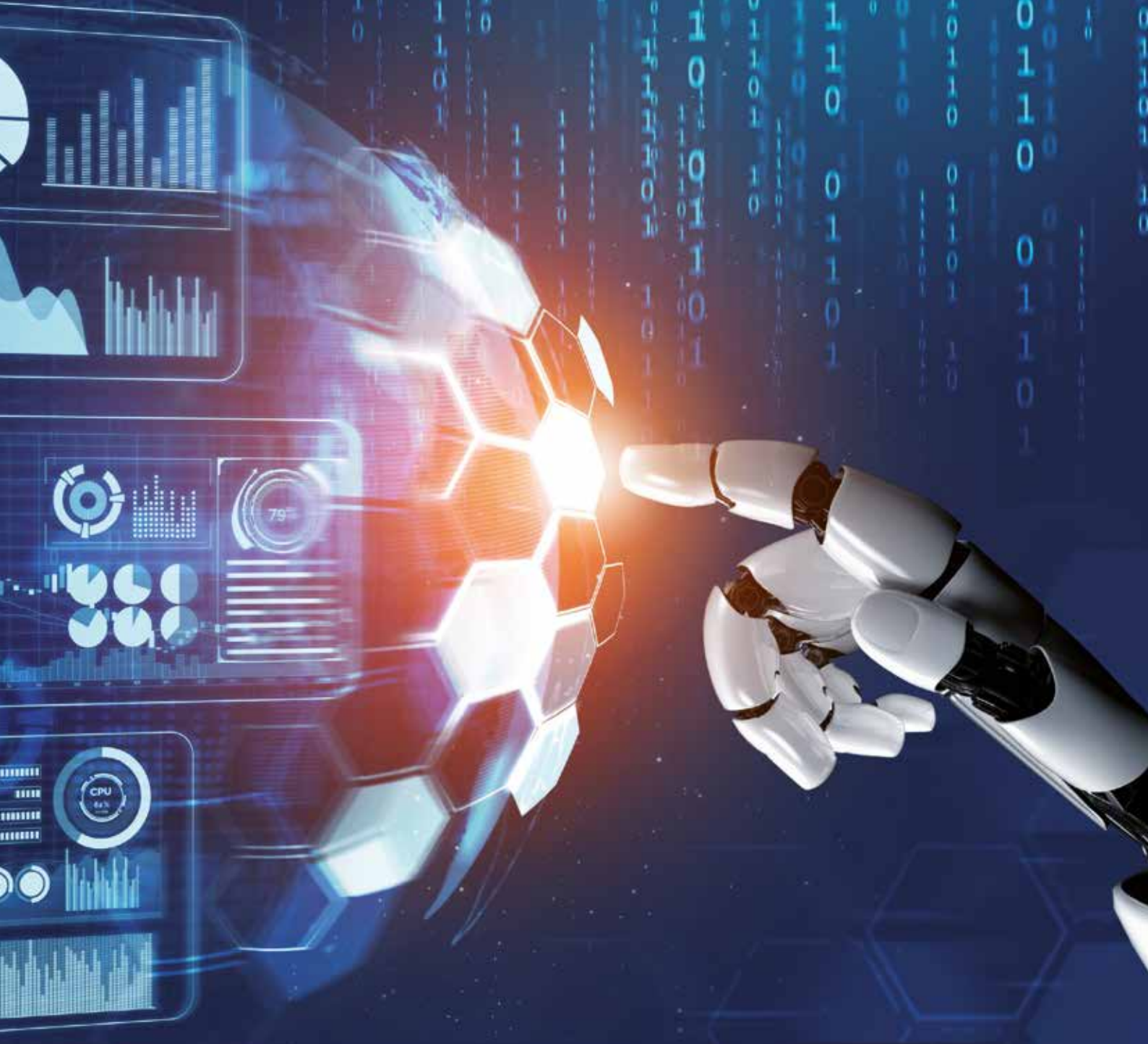
puter scientists, engineers and skilled workers in the Rhineland-Palatinate.

Technology transfer offices, patent information centres, the Science & Innovation Alliance, the Smart Factory, the SME 4.0 Competency Centre, etc. contribute to the integration of research institutions within the regional economy and help to ensure its competitiveness now and in the future.



21.200

In 2018 there were around 14,900 students enrolled in more than 100 degree programs at **TU Kaiserslautern**, among those 2,650 were foreign students. A further 6,300 students were enrolled at the three locations of the **University of Applied Sciences, Kaiserslautern** in some 60 degree programs.



IT Systems, Software, and Artificial Intelligence

An important industry in the West Palatinate

An IT cluster has developed in recent years on the edge of the Palatinate Forest and has attracted international attention: California has its Silicon Valley; the West Palatinate has the Silicon woods. It forms Europe's strongest network in the field of software development in combination with Saarbrücken, Karlsruhe, Walldorf, and Darmstadt. Especially noteworthy in this regard are the capabilities in the area of artificial intelligence, one of the most important technologies of the future.



A strong network of universities, institutes, and innovative companies, modern infrastructure, and a countless number of smart thinkers form the basis of the dynamic growth of the IT sector in the West Palatinate.

The development of the greater Kaiserslautern area into a globally recognized IT center can be traced back to the founding of the TU Kaiserslautern in 1970. The departments of computer science and mathematics, as well as electrical engineering and information systems quickly developed into major areas of expertise. In the mid-1990s, the University of Applied Sciences Kaiserslautern added a training campus in Zweibrücken, where today teaching is done in the fields of computer science and microsystems technology. Furthermore, by establishing a virtual design course, the University of Applied Sciences laid the foundation for the West Palatinate to take a leading role in the technologies of virtual reality and augmented vision.

Seeing the outstanding research work and with the financial support of the public sector, several renowned research institutes established their offices in the vicinity of the TU Kaiserslautern. TU Kaiserslautern had already become a global hotspot for the study of artificial intelligence as early as the 1980s. This figured prominently in the foundation of the German Research Center for Artificial Intelligence (DFKI) in 1988, which is now the largest research center in this field worldwide. Following quickly in the mid-1990s, the Fraunhofer-Institutes for Industrial Mathematics (ITWM, 1995) and for Experimental Software Engineering (IESE, 1996) were established as spin-offs from the Faculties of Mathematics and Computer Science. The Max Planck Institute (MPI) for Software Systems arrived in 2004. These four research institutes currently have a combined staff numbering about 1,000 employees in the field of computer science in Kaiserslautern.

Over the past 20 years, the universities, institutes, and numerous spin-offs have contributed to the IT sector becoming an increasingly strong growth engine for the regional economy. Among the successful start-up companies are such firms as Insiders Technologies and Empolis. The center is increasingly attractive to more and more internationally active enterprises that are setting up subsidiaries here. One example is the decision by John Deere to locate their European Technology and Innovation Center, which maintains close ties to universities and research institutes, in Kaiserslautern. The same is also true for many other companies like Accenture, BISON, Top Desk, and Infront Financial Tech-

nology. Today, a concentration of IT companies can be found, in particular, in the vicinity of TU Kaiserslautern and the Zweibrücken campus of the University of Applied Sciences, as well as in the PRE technology park on the outskirts of the city, which offers technology-based companies the best opportunities for expansion.

Universities, institutes, start-ups, and established firms combine to form a dynamic cluster, which is also accompanied by numerous public sector activities. Many founders of companies in the IT branch have obtained support from the joint start-up center of the universities as well as from the Business + Innovation Center (BIC) Kaiserslautern. The state government has also established „RP Tech“, a business start-up & transfer center to improve knowledge and technology transfer and increase the number of excellent technology-oriented start-ups in the state over the next few years. Kaiserslautern is already the most important location for start-ups in Rhineland-Palatinate. Private initiatives, like the Digital Transformation Hub (DT:Hub), also contribute to this by offering start-up candidates a friendly, growth promoting eco-system.

One of the most important competence areas of „Silicon woods“ is Artificial Intelligence (AI). The federal and state governments plan to further strengthen research and development of market ready products in the field of artificial intelligence and Deep Learning in a broad strategy to expand the unique selling points of the location. DFKI and Fraunhofer-Institute as well as local companies like Empolis and Insiders Technologies have developed comprehensive expertise in these fields. Such activity should lead in the coming years to additional, innovative products and services „Made in RLP.“ Potential fields of application include healthcare, education, and security.

In the area of IT system security, the region also bundles competencies that are reflected in the Kaiserslautern IT Security Initiative, but also by the presence of specialized companies, as represented by data recovery experts Convar and CBL. The IT competence of the West Palatinate is concentrated in a field that is experiencing ever greater significance in light of the digital transformation of the economy and society.

For several years, the West Palatinate has been a digital pilot region, taking advantage of the digital research capabilities of the technology center. The first competence center for the Mittelstand 4.0 (SMEs) in Germany was established here in 2016, growing from the activities of Smart Factory and having responsibilities for the federal states of Rhineland Palatinate and Saarland. The aim is to help pave the way for successful digital transformation within the SME sector. In parallel, the interest in digital products in daily life has increased.

Since 2017, Kaiserslautern, the winner of the Bitkom „Digital City“ competition, has received federal and state funding to assist in its transition to a „Smart City.“ The cities of Zweibrücken and Pirmasens, part of the framework of a statewide network, also benefit from the knowledge gained.

At the same time, Fraunhofer IESE is developing the „digital villages“ of the future in rural model communities within the West Palatinate. The West Palatinate is making great digital strides thanks to a new infrastructure: Since 2019, the greater Kaiserslautern area has been a pilot region for the latest 5G mobile communications standard and, in this sense, will be one of the first to benefit from new technical possibilities.

Locations

- Industry Companies
- Vocational Schools, Universities, Institutes, Networks



No	Company	Competencies	Information
1	Aberle GmbH (Körber Gruppe)	Autom. intralogistics systems software	www.aberle-automation.com
2	apoplex medical technologies GmbH	Medical IT	www.apoplexmedical.com
3	Bison Deutschland GmbH	Retail merchandise management systems	www.bison-group.com
4	blueAlpha GmbH	Software for the healthcare sector	www.bluealpha.de
5	CBL Datenrettung GmbH	Data retrieval	www.cbltech.de
6	comlet Verteilte Systeme GmbH	Embedded software development	www.comlet.de
7	Convar Systeme Deutschland	Data retrieval	www.convar.com
8	Cranimax	Planning software for crane operations	www.cranimax.com
9	Creonic GmbH	IP Cores	www.creonic.com
10	DCON Software & Service AG	Enterprise Service Management	www.dcon.de
11	DDG AG	Experts in the use of AI	www.ddg.ag
12	Demando GmbH	Full-service IT provider	www.demando.de
13	Dr. Lauterbach & Partner GmbH	Consulting, development, services	www.dr-lauterbach.de
14	Empolis Information Management GmbH	Smart Information Management Software	www.empolis.com
15	enbiz GmbH	Information security	www.enbiz.de
16	FinaSoft GmbH	Software for financial services	www.finasoft.de
17	flexstructures GmbH	Simulation software for cable etc.	www.flexstructures.de
18	frogblue Technology GmbH	Smart-Home Control Systems	www.frogblue.com
19	Human Solutions / Avalution / Assyst	Simulation Software for Economics	www.human-solutions.com
20	Infront Financial Technology GmbH	Financial data services	www.infrontfinance.com
21	Insiders Technologies GmbH	Software for AI-based communication	www.insiders-technologies.de
22	K-Net GmbH	Telecommunication systems	www.k-net.de
23	kamaste it	Software	www.kamaste.it
24	klip-asca GmbH	IT Service and Management	www.klip-asca.de
25	Matelso	Software for Call Tracking	www.matelso.com
26	Math2Market GmbH	Software for materials simulation	www.math2market.de
27	MiniTec Smart Solutions GmbH	Production assistance systems	www.mss-digital.de
28	Mobotix AG	Software and hardware for surveillance cameras	www.mobotix.com
29	Nagarro ES	IT service provider / SAP /ERP	www.nagarro-es.com
30	Osseno GmbH	AI-supported business software	www.osseno.com
31	proALPHA Business Solutions GmbH	Software for manufacturing and trade	www.proalpha.com
32	Saitow AG	E-Commerce platforms	www.saitow.ag
33	Schwarz IT GmbH	Network solutions, etc.	www.schwarz-it.de
34	SoftEngine	Software for trade and industry, etc.	www.softengine.de
35	Spheron-VR AG	Software for 360° photography	www.spheron.com
36	teckpro Software Solutions GmbH	Software für Banken- und Versicherungen	www.teckpro.de
37	TOPdesk Deutschland GmbH	IT service management, etc.	www.topdesk.de
38	verit Informationssysteme GmbH	Software for test management	www.klaros-testmanagement.com
39	VR Coaster GmbH & Co. KG	VR roller coaster technology, etc.	www.vrcoaster.com
40	Wikon Kommunikationstechnik GmbH	Communication systems for M2M	www.wikon-m2m.de

Nr.	Universities, Institutes, Networks	Information
41	German Research Center for Artificial Intelligence (DFKI)	www.dfki.de
42	Fraunhofer-Institute for Experimental Software Engineering (IESE)	www.iese.fraunhofer.de
43	Fraunhofer-Institute for Industrial Mathematics (ITWM)	www.itwm.fraunhofer.de
44	Kaiserslautern University of Applied Sciences	www.hs-kl.de
45	IT-Security Initiative Kaiserslautern	www.it-sicherheit-kl.de
46	Our City – Digital at Heart	www.herzlich-digital.de
47	Max-Planck Institute for Software Systems	www.mpi-sws.org
48	Science Alliance Kaiserslautern	www.science-alliance.de
49	Kaiserslautern University of Technology	www.uni-kl.de

Nr.	Vocational Schools (BBS)		
50	VS I - Technik Kaiserslautern	58	VS Rodalben
51	VS Zweibrücken	59	Landgraf Ludwig secondary school plus Pirmasens
52	VS Kusel	60	Secondary school plus Lauterecken-Wolfstein
53	VS Landstuhl	61	Master Certification School

IT Systems, Software, and Artificial Intelligence Companies





apoplex medical technologies GmbH

Innovative Stroke Prevention

Faster, safer, and more resource efficient than standard patient monitoring: the Stroke-Risk-Analysis method from Apoplex Medical Technologies is successfully deployed to more than 130 clinics throughout Germany and is fast becoming the industry standard for stroke secondary prophylaxis.

Apoplex Medical Technologies was founded in 2004 in Pirmasens, located in the Westpfalz. The medical systems specialist develops new and innovative technological products for the prevention of stroke for worldwide deployment. The company focuses on easy to use and efficient methods of patient screening using medical technologies for the prevention of stroke and vascular dementia. The SRA (Stroke-Risk-Analysis) method is the first, practical screening process for paroxysmal atrial fibrillation. The method is available in variants for specially designated stroke units and for use in doctors' practices. Apoplex Medical Technologies is supported by an extensive academic and clinical network that complements the in-house competence in the fields of mathematics, physics, and medicine.

Worldwide more than 130 clinics and 800 physicians in private practice currently use SRA to identify the cause of strokes that have occurred and to prevent a first event. The declared aim is to initiate effective treatment as early as possible to prevent stroke and its after-effects.

The efficiency of the method has been proven many times in internationally published clinical studies. Approximately 79,000 patients were screened with SRA in 2019. In more than 11,000 of these, manifest AFib was detected and early therapy could be initiated to prevent the patients from being „hit“ by stroke. In the future, these proven functions will be expanded with additional AI components so that besides atrial fibrillation, other causes of stroke can be detected at an early stage – worldwide.

„With our strategy of relying on an algorithm to uniformly determine and evaluate the existing risk of atrial fibrillation and stroke, we are setting a new gold standard in Europe and worldwide,“ said Albert Hirtz, Managing Director of Apoplex Medical Technologies.



Competencies:

Worldwide unique screening methods that can detect risk of atrial fibrillation in flicker-free episodes, backed by first class clinical evidence.

Kontakt:

apoplex medical technologies GmbH
Delaware Avenue 1-3
66953 Pirmasens
Telephone: +49 (0)6331 6989980
E-Mail: info@apoplexmedical.com
www.apoplexmedical.com



Bison Deutschland GmbH

Leading IT Business Solutions

Bison Deutschland, based in Kaiserslautern, is the IT competence center for development, sales, consulting, and implementation of retail business solutions.

The company was founded in 1995 and has approximately 50 employees at the Kaiserslautern site, where they develop specialized Smart Retail ERP services for wholesale and retail operations with integrated warehouse and store management solutions. The structure of installations ranges from major full-range food retailers to Cloud hosted start-ups. Bison ensures the unrestricted release capability for the programming of individual requirements based on industry packages, which lets customers respond flexibly, quickly, and with confidence to changes in the market conditions.

Furthermore, at our Hamburg branch, we develop and distribute Smart Trading ERP services that are specifically designed for international commodity trading and the import of textiles, footwear, and manufactured goods.

Bison Deutschland is a subsidiary of Bison Schweiz, a leading IT provider with headquarters in Luzern, Switzerland. Bison Schweiz is a company of the fenaco cooperative, a corporation with strategic business units in the agriculture, food production, energy, and retail trade

sectors. With more than 30 years of experience and 300 employees, Bison develops and implements smart IT software products for the fenaco cooperative and companies worldwide.

Bison's smart retail strategy enables everyone and every company in the retail sector to achieve more. In this context, Bison accompanies retailers on the path to the complete digitalization of all retail operations, providing the best software products for digital transformation – convenient, smart, and sustainable.



Competencies:

Development, sales, consulting, and implementation of retail business solutions

Contact:

Bison Deutschland GmbH
Europaallee 3-5
67657 Kaiserslautern
Telephone: +49 (0)631 4146410
E-Mail: mail@bison-group.com
www.bison-group.com



blueAlpha GmbH

Next generation IT for logistics and material management in the health-care sector

BlueAlpha is a software systems provider with expertise in web-based E-business solutions. Our in-house developed family of birato software systems is the basis for our focus on the healthcare sector.

birato is an integrated software package used by purchasing associations and hospitals to comprehensively and individually map all intralogistics processes. Individual substitution processes facilitate a quick switch to a more cost-effective product by the purchasing association on behalf of its members with the aim of gaining a competitive advantage. The optimization and management of procurement processes in the health care system can result in considerable cost savings. Birato is technologically unique in the healthcare industry. Currently, the market can offer no other material management software capable of satisfying the requirements of Logistics 4.0 that provides this level of system architecture in a future oriented and comprehensive design.

In addition to our products unit, we also offer our customers a broad portfolio that includes consulting and customizing, product support, IT services, and system hosting. Furthermore, we implement Internet platforms

and comprehensive B2B and B2C software products in the area of process optimization, for example, in heterogeneous systems environments or for online trade. We believe the success factor for long term corporate management depends on treating our customers and employees fairly and with respect. Our corporate culture is characterized by transparency and fairness; professional and personal development and a healthy, individual work-life balance hold a top priority.



Competencies:

- Birato software systems
- Consulting and project management
- Customizing and client projects
- Hosting and Cloud solutions
- Monitoring, IT service and support
- Application support, second level support
- Web applications, individual mobile solutions
- Workshops and training

Contact:

blueAlpha GmbH
Amerikastraße 21
66482 Zweibrücken
Telephone: +49 (0)6332 4887229
E-Mail: info@bluealpha.de
www.bluealpha.de



CBL Datenrettung GmbH

Help for lost data

The worldwide leading service provider for data recovery and computer forensics has operated in the Kaiserslautern lab for more than 20 years. Companies view us as a serious partner for all cases of data loss – with a free diagnosis and the „No data - No charge“ principle.

Systems fail and people make mistakes. Although most companies operate some type of data backup system, data is lost every day for which there is no backup currently functioning. Lost data threatens the image, the ability to operate, and even the existence of a company. The data loss may be the result of damaged memory cards and USB sticks, or notebooks and external hard drives that no longer respond after being dropped or a power surge or a major accident: hard disks may fail during the reconstruction of a RAID server, computers fall victim to fire disasters and floods.

Clean rooms and chip readers

Even in cases when the laymen cannot imagine that any data can be reconstructed, CBL Data Recovery can help. The success rate is over 85 percent and, with second opinions, the data rescue team in Kaiserslautern can still help in almost half of such cases when competitors have given up.

The ISO 9001:2015 certified company is the German lab of the Canadian CBL Data Recovery Technologies, with worldwide operations since 1993.

Companies in the West Palatinate have a logistical advantage of being able to hand carry the affected data carrier to the lab in Kaiserslautern. The effort to reconstruct damaged data at CBL carries no financial risk. IT service providers, who are normally the first point of contact for IT problems can benefit from CBL's partner program



Competencies:

- Data recovery for all storage media, manufacturer- and system independent
- ISO9001:2015 certified clean room lab - Germany
- 27-year experience and labs at locations worldwide
- Technology leader in hard drives, SSD, Smartphones, and RAID
- Known and recommended by manufacturers
- Free analysis and „No data – No charge“ guarantee

Contact:

CBL Datenrettung GmbH
 Von-Miller-Straße 13, Büro E53
 67661 Kaiserslautern
 Toll-free number +49 (0)800 55 00 999
www.cbltech.de

Partner programm:
 Telephone: +49 (0)631 342890
 E-Mail: partners@cbltech.de
www.cbltech.de/partner-programm/



comlet Verteilte Systeme GmbH

Software Engineering with Foresight

comlet Verteilte Systeme GmbH is a highly specialised development service provider in the field of embedded systems. Using years of project experience and know-how from many different industries, comlet develops sustainable and sophisticated software solutions according to specific customer requirements. Our customers rely on our competent and comprehensive all-round support!

comlet Verteilte Systeme GmbH was founded in 2001 by professors and graduates of the Department of Computer Science of the University of Kaiserslautern in Zweibrücken. Altogether more than 80 experts work at the locations in Zweibrücken, Darmstadt, Munich and Karlsruhe. In addition to traditional order development, we provide our customers with on- and off-site support.

As a technology partner and know-how supplier, we are able to tailor our offer to fit.

Commercial Vehicles, Automotive, Industrial Internet of Things, Smart Home & Living and Industrial – every industry and every branch has its peculiarities. In order to precisely meet all requirements, the experts from the departments of Configuration Management, Test Engineering & Validation, Distributed Security and System Architecture keep them in focus and coordinate closely with each other.

We offer a complete range of services for software development. This includes consulting, development, system integration, testing, maintenance and training.



comlet
Engineering your success

Competencies:

- Embedded Systems
- Infotainment
- IT-Security
- Software Engineering
- Automotive
- IoT
- Commercial Vehicles

Contact:

comlet Verteilte Systeme GmbH
Amerikastr. 27
66482 Zweibrücken
Telephone: +49 (0)6332 811100
E-Mail: info@comlet.de
www.comlet.de



Cranimax GmbH

Intelligent planning software for crane operations

From Zweibrücken into the world: CRANIMAX is one of the largest exporters in the West Palatinate. The company has become an indispensable software supplier and service provider to various industries in more than 100 countries around the world as it supports more than 4,000 customers in the highly complex planning of crane operations for all leading crane manufacturers.

Planning crane operations is an individual and highly complex challenge and requires extensive preparation. In addition to constantly changing local conditions and space constraints at a construction site, finding the ideal balance between timing, transport costs, and the optimal crane model can be difficult – not only economically, but above all from a risk perspective.

The CRANIMAX software calculates more than 1 billion possible combinations across the entire fleet, while exceeding all safety standards – the result is the right crane, optimally configured, and in the right place. This not only reduces the transport and set-up costs, but also improves the long term safety at the construction sites. It enables our customers to win with professional planning, avoid planning mistakes, and keep accidents down to the minimum.

Of course, we also provide technical support and top training services regarding our products to our customers. Furthermore, we constantly search for new forms of innovation and ideas to improve our products together with our partners, research institutes, and universities.

CRANIMAX®

Competencies:

- Digital crane deployment planning
- Increased safety at construction sites
- Forward looking technologies
- BIM 4.0
- Worldwide support and training

Contact:

CRANIMAX GmbH
Amerikastrasse 14
66482 Zweibrücken
Telephone: +49(0)6332 9074100
E-Mail: franziska.mohr@cranimax.com
www.cranimax.com



Creonic GmbH

Chip design in the Information Age

The world is currently undergoing a transition from the industrial age to the information age, where information is becoming one of our most important and valuable resources. We at Creonic want to be an active participant in this transition.

We believe reliable storage and transmission of vast amounts of digital data to be the cornerstones of this new age.

Creonic strives to satisfy the need for reliability and the ever increasing data rates with products of the highest quality. We help to operate modems, data centers, satellites, and more, with the latest algorithms of communication technologies. Our chip designs enable start-ups and global players anywhere in the world to build the infrastructure of the future.

The designs of our microchips are licensed as so called IP cores for various technologies. Entering into partnerships with well-known chip manufacturers like Xilinx and Intel gives us access to cutting edge technologies, which we integrate into our products and services. Creonic is a member, e.g. in the DVB consortium, where we actively follow standardization developments and gain insights into the technologies of tomorrow today.

Quality is not just for the content of a glossy brochure. For us, it means the continuous integration of customer feedback. We achieve the high quality through years of effort and by maintaining the standards for ISO 9001:2015 certification. The latest verification methods such as linting, assertion-based verification, intelligent functional coverage, code coverage, etc., contribute to the fact that customers can trust our designs even under the most adverse conditions in space. Numerous small satellites (nanosatellites) use Creonic technology to transmit image data to earth.


ip cores & system solutions

Competencies:

- Chip design for FPGA (Xilinx, Intel) and ASIC
- Algorithms for communication systems, e.g.,
- Forward error correction, FEC (LDPC, Turbo, Polar, RS, BCH, etc.)
- Standards: 5G, DVB-S2X, DVB-S2, DVB-RCS2, WiFi, CCSDS, and many others
- Customized IP cores designed for individual needs, etc.

Contact:

Creonic GmbH
Bahnhofstraße 26-28
67655 Kaiserslautern
Telephone: +49 (0)631 34359880
E-Mail: info@creonic.com
www.creonic.com



DEMANDO GmbH

Experienced full-service and future-oriented IT provider

Making your IT services better one idea at a time with effective and efficient products: DEMANDO solves your challenges for you with an experienced and forward looking full-service IT department equipped with its own data center in Kaiserslautern.

Your partnership with us gives you the advantages of one of the most secure and modern data centers in Europe and the high level of expertise of our employees: DEMANDO provides you with a unique combination of IT operations, applications, service, and consulting.

Our systems house in Kaiserslautern provides a range of IT services to include SAP solutions, products for the energy industry, and programming services.

With your interests in mind, we always respect the principle of open and cooperative contact in all customer projects: this produces intelligent outsourcing concepts for you, which are characterized by quality, transparency and a good price/performance ratio.

Our customers also recognize and appreciate our many years of experience as an authorized SAP Hosting Partner and certified SAP Customer Center of Expertise. The best term to use that describes our activities based on our comprehensive know-how, is „IT-maker“:



More than 60 experts are more than problem solvers – they are there as your personal point of contact to support you .

Several years ago, DEMANDO was spun-off as an independent business from the IT department of SWK (the Stadtwerke Kaiserslautern). SWK owns 100% of the DEMANDO shares and is itself 100% owned by the City of Kaiserslautern. We intentionally chose the term „IT-Maker“ to describe DEMANDO and what we do. We grow a steady relationship of trust as we are located nearby and have direct contact with you. Our targeted advice, certifications, and our promise of maximum IT security are our guarantee that you get quality, not mass produced work.



Expertise:

- Full-service IT provider
- SAP solutions, SAP Hosting Partner, SAP Customer Center of Expertise
- Solutions for the energy industry
- Development services
- In-house data center

Contact:

DEMANDO GmbH
 Europaallee 10
 67657 Kaiserslautern
 Telephone: +49 (0)631 8001-6000
 E-Mail: info@demando.de
www.demando.de



DCON Software & Service AG

Committed to successful IT projects

DCON Software & Service AG was founded by students at TU Kaiserslautern in 1994. Today, we are a globally active consulting company for Enterprise Service Management software. As pioneers, project rescuers, and facilitators, we work passionately on behalf of well-known customers. Together with Servity, we deliver just the right software to ensure success.

The supporting pillars of DCON are the more than 25 years of project experience and the professional competence of our 135 employees. Day after day, we work together to improve the service processes of companies and public agencies. We combine customized consulting services with the use of our standard software Servity. Customers like Daimler, BWI, and Unisys consider us as a competent partner thanks to our balanced focus on people, tools, and processes.

Our goal: satisfied employees and enthusiastic customers. You can find us at various job sites and at our three branches in Kaiserslautern, Stuttgart, and Bremen – working together for long term success.

More than 800,000 IT jobs

Servity combines a broad functional range with a strong focus on the user experience. Our software expands daily at DCON headquarters through agile software engineering to meet the highest quality standards of our worldwide users.

As a comprehensive solution, Servity supports the management of more than 800,000 IT workstations in demanding scenarios. A powerful workflow engine sits at the heart of the design. In more than 129 million workflow-steps per year, it successfully masters the requirements for a properly functioning, fully automated, centralized service management system.

DCON

● ● ● ● We improve IT ● ● ●

Competencies:

- IT- & Enterprise Service Management
- Output Management
- Software Engineering
- Implementation & System integration
- IT Consulting
- ITIL processes

Contact:

DCON Software & Service AG
Europaallee 31
67657 Kaiserslautern
Telephone: +49 (0)631 920820
E-Mail: info@dcon.de
www.dcon.de



DDG AG – THE AI ECOSYSTEM

AI partner for the German Mittelstand

DDG AG provides a platform for artificial intelligence and data-driven products and services by, with, and for the German Mittelstand (SMEs).

The company with its roots in Kaiserslautern uses artificial intelligence to support medium-sized companies and help to solve various challenges in the company such as in the areas of production, sales, and logistics. The daily routines of small and medium-sized enterprises always provide real use cases as the starting point in the creation of new products and services. Such practical challenges are not isolated cases, but often apply to entire industries. The customer can integrate these AI solutions in a start-up company and market them worldwide.

Focused on the Mittelstand (SMEs)

The reason why DDG specializes in small and medium sized companies is simple: Many hidden champions with long traditions are among the German SMEs, but they are rather skeptical when it comes to artificial intelligence and have not yet recognized its full potential or seen the many and varied applications already available. Enter DDG: together with our customers, we develop digital products and services for the most diverse areas.

Building digital Hidden Champions together

The DDG model treats customers as partners on equal terms, who contribute industry and process knowledge to cooperate in creating new AI products.

DDG shares its knowledge of AI methods, implementation experience, and financial resources and is involved from the start in entrepreneurial and financial risk to realize joint success. This form of collaboration is called „co-innovation.“

The developed product is the first step in a process that may lead to the founding of a start-up company that will distribute the product on a worldwide and industry wide basis. This works because the products and services based on AI are designed from the start in such a way that they can be individually adapted at a later time without any major development effort.

DDG has already founded several start-ups with its partners – with more to follow this year. The company is looking to establish a long term portfolio and is always seeking new medium-sized co-innovation partners and investors who will support the development and share in the success of the next digital hidden champion.



Competencies:

- Artificial Intelligence
- Company Building
- Machine Learning
- Software Engineering
- Digital Business Models

Contact:

DDG AG · Standort Kaiserslautern
Trippstadter Straße 110
67663 Kaiserslautern
Telephone: +49 (0)631 343591-0
E-Mail: info@ddg.ag
www.ddg.ag



Dr. Lauterbach & Partner GmbH

Worldwide success with SAP based business solutions

Dr. Lauterbach & Partner is a medium-sized software and consulting company specializing in the implementation and further development of SAP-based business solutions for the print and packaging industry. The specialists at Dr. Lauterbach & Partner develop specific modules for print and packaging functions to supplement the SAP industry standard.

As a leading supplier of SAP-based business software for the print and packaging industry, Dr. Lauterbach and Partners has successfully implemented international customer projects for more than 25 years.

The preconfigured industry solution follows the principle of mapping all fundamental business processes with the world-leading SAP ERP system. Working in collaboration with leading companies on the basis of SAP, industry-specific requirements are then further developed and improved.

The LP. Solution Suite provides a highly integrated, all-in-one solution that automates business processes across company boundaries for medium-sized and large companies worldwide, enabling them to remain competitive over the long term.

As a long-standing SAP partner and with more than 25 years industry expertise, LP. initiated the „Innovation Circle,“ a print & packaging community. The aim is to bring leading companies of the industry together to highlight the potential of new technologies in the field of digitalization, Industry 4.0, and the Internet of Things and, collectively, to make them more useful.



**DR. LAUTERBACH
& PARTNER GMBH**

Competencies:

- SAP based business solutions for the print and packaging industry
- MES software to capture factory data, machine data, and material flow as well as for the analysis of production data and calculation of key indicators

Contact:

Dr. Lauterbach & Partner GmbH
Amerikastraße 27
66482 Zweibrücken
Telephone: +49 (0)6332 485-0
E-Mail: info@dr-lauterbach.de
www.dr-lauterbach.de



FinaSoft GmbH

Connect with our solutions

FinaSoft provides consulting and software for banks, asset management companies, and family offices. FinaSoft develops FinaDesk, a B2B4C platform, to assist financial services in the transformation process from the analog world and to ensure that they remain competitive in today's digital world.

FinaSoft products connect the end customer digitally to the employees at the financial service provider, facilitating customer-oriented consulting and improving the long term satisfaction of all parties.

In this way, advisors and customers benefit from an identical view of the assets that is available to both parties at all times. FinaDesk also supports process optimization as the organization moves towards digitalization. The powerful platform is based on state-of-the-art technologies, can be operated in any cloud environment, and offers user-friendly operation with its intuitive and flexible web interface.

Innovative, custom software products raise the communication between customer and financial services provider to new levels. The integration of a new system in an existing environment or the development of individual modules to expand an existing system are just a few examples of our successful customer projects. At FinaSoft, the customers and their concerns always come first. Only after thorough examination of the situation,

the wishes, and the difficulties do we present our specific proposals.

The business philosophy of this company can be summed up in three the words: Familiar – Consistent – Different. The real capital of the company is the customer trust in our efficient service. Our experienced staff consistently provides the assurance that the only solution presented is the one the customer needs. We are differentiated not only by our long and shared history with industry professionals, but also by the collective process of creating individual solutions together with the customer.

FINASOFT

vertraut • konsequent • anders

Competencies:

- FinaDesk – B2B4C platform for the employees and clients of banks and asset managers and Family Offices
- Individual software in the world of securities and portfolio management
- Consulting – professional system optimization of structures and processes in the securities business

Contact:

FinaSoft GmbH
Karl-Marx-Straße 37–39
67655 Kaiserslautern
Telephone: +49 (0)631 8924 7500
E-Mail: info@finasoft.de
www.finasoft.de



Empolis Information Management GmbH

AI Pioneer and Digitalization Partner

We assist our customers in making the right decisions. There is a good possibility that you are unaware that you have already been in contact with us: Currently approximately 700,000 professional users, at around 500 Empolis installations worldwide, use our products every day to serve around 40 million end customers.

Empolis is a leading supplier of Smart Information Management software for the integrated preparation, management, analysis, intelligent processing, and presentation of all information relevant to a business process. The intelligent linking of knowledge and content management is developed according to the Empolis motto „DECIDE. RIGHT. NOW.“

According to WirtschaftsWoche, we are one of the leading AI pioneers in Germany. We bundle artificial intelligence methods for CRM and Service Management in Cloud solutions. The result is a completely new customer approach, service quality, and digital „As a Service“ and also new platform business models – from signal to action.



Public institutions like the Federal Office of Administration and many national and international companies such as ABB, BMW, Bosch, Carl Zeiss Microscopy, Homag, Koenig & Bauer, Kuka, MAN Energy Solutions and Vodafone, rely on Empolis products and our comprehensive industry and process know-how.

Empolis is a shareholder in the German Research Center for Artificial Intelligence (DFKI) and represented on the Board of the Science and Innovation Alliance Kaiserslautern (SIAG).

Competencies:

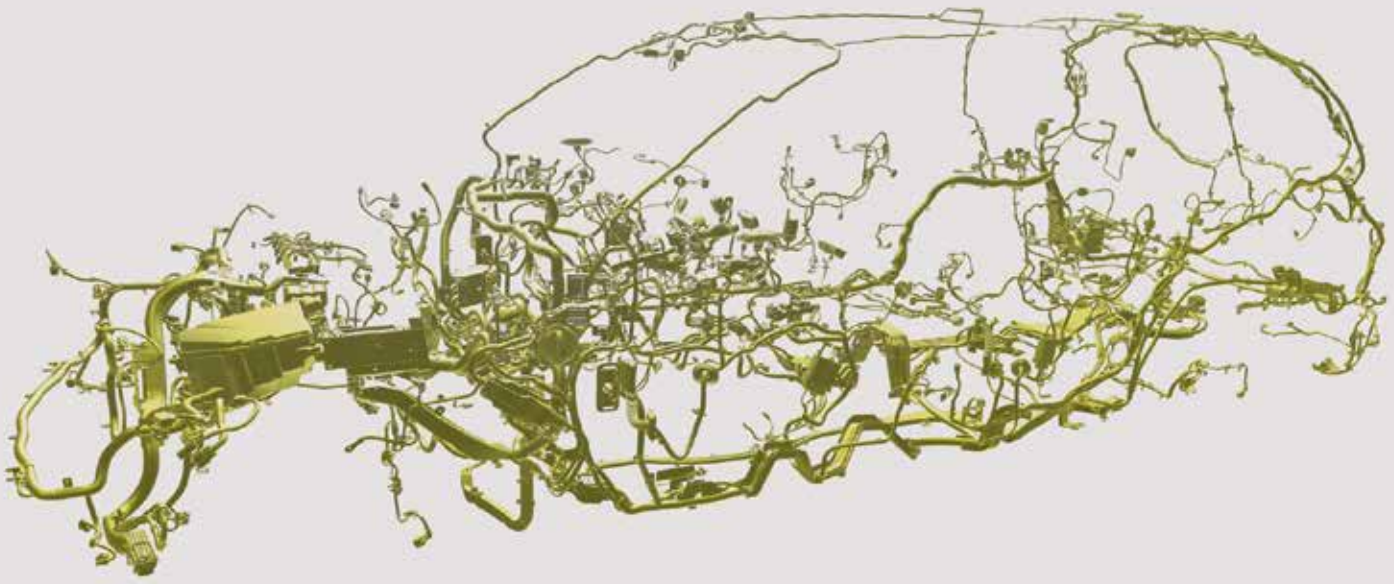
AI-based software for CRM and Service management for customers in manufacturing, healthcare, and public administration.

EMPOLIS

INFORMATION MANAGEMENT

Contact:

Empolis Information Management GmbH
Europaallee 10
67657 Kaiserslautern
Telephone: +49 (0)631 680370
info@empolis.com
www.empolis.com / www.service.express



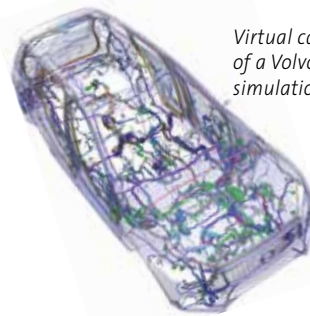
flexstructures GmbH

Make it flexible

The passion for innovative technologies is our guarantee of success.

Whether cables or hoses, there is something about flexible parts... Often, they are what make life difficult for the product designers and production planners and this is precisely where FleXstructures can help. Formed in 2012, the Kaiserslautern software company is taking a completely new path from research to industrial practice – and that has made it a global technology and market leader. New algorithms were the groundbreaking development that enabled kilometers of cable and hose systems to be installed in ever-smaller installation spaces. Taking function and weight into account, we can optimize and test the installation on a virtual vehicle. Processes that previously took weeks and months to compete can now be resolved with IPS software in real time.

The use of these new software products has become an integral part of the product development process for modern vehicles. Worldwide more than 100 vehicle manufacturers, suppliers, and service providers have come to rely on the products from fleXstructures. The company managed to find the best spot on Kaiserslautern's innovation mile. Close to the Fraunhofer-Institutes, the German Research Center for Artificial Intelligence, and the TU Kaiserslautern, our international team continues to provide customers with the leading technologies



Virtual cable and wiring system of a Volvo XC90 using IPS cable simulation

and services; to create attractive jobs; and to recruit and retain young scientists for R&D jobs.

As a young company, FleXstructures has already received several awards: the Robotics Award 2017, the Success Award 2018, and the Innovation Award 2019.

Customers come to us from the automotive and automation sectors, but also from industrial manufacturing like motorcycles, agricultural machines, commercial vehicles, and rail vehicles. The software products from fleXstructures assist customers in shortening the product development processes, and saving on hardware and development costs. Customers benefit from the integrated approach to software sales, consulting, and research.



Competencies:

- 3-D mechanical design and protection of cables, wiring harnesses, and hoses
- Real time design optimization
- Automated tasking and workflow planning for robot stations
- Digital human models for planning assembly processes and ergonomic studies

Contact:

flexstructures GmbH
Trippstadter Straße 110
67663 Kaiserslautern
Telephone: +49 (0)631 68039360
E-Mail: ips.pr@flexstructures.de
www.flexstructures.de



Insiders Technologies GmbH

Innovative software products based on artificial intelligence

Today more than ever before, companies face the challenge of exploiting the opportunities of the digital transformation. Insiders provides state-of-the-art software for a high process efficiency and top service response for customer communications.

Insiders Technologies is a technology leader and successful software supplier providing intelligent omni-channel response management and customer communication software. Innovative products based on artificial intelligence ensure highly efficient processing of all incoming documents from all communication channels with individual and fast customer communication, for example, via mobile solutions and/or chatbots.

Insiders Technologies was established more than 25 years ago and is the most successful spin-off company of the German Research Center for Artificial Intelligence (DFKI). As an award-winning IT company, Insiders Technologies has offices in Kaiserslautern, renowned for being a high-tech region, and in Berlin, the stronghold of start-ups, and in Munich. It has long since become a technology leader for the digitalization of business processes.

The latest methods of artificial intelligence provide the basis for our technological lead. Insiders Technolo-

gies continuously introduces new, innovative products to the market. This is made possible by OVATION, the self-learning artificial intelligence inside all Insiders products, for example, it is responsible for content recognition, responses to queries, or entering into a dialog with the customer. For example, queries to the staff of the human resources department are automatically handled by an intelligent chatbot. The chatbot can be reached around the clock – in an employee app, via Intranet or a portal, or the company chat.

More than 2,500 market leaders, globally active TOP 100 companies from nearly all sectors rely on our intelligent products and solutions: AXA, Barmenia, BSH Hausgeräte, DAK-Gesundheit, Deichmann, DEVK, EDEKA, HUK Coburg, MAN, Markant, Panasonic, Postbank, WWK, and many others.

insiders
technologies

Competencies:

- Software for the digital transformation
- Intelligent Cloud services
- Latest AI methodologies, e.g., Deep Learning, Natural Language Processing
- Agile and creative method, e.g., Scrum, Design Thinking
- Open interdisciplinary culture of teamwork and cultural diversity

Contact:

Insiders Technologies GmbH
Brüsseler Straße 1
67657 Kaiserslautern
Telephone: +49 (0)631 92081-1700
E-Mail: info@insiders-technologies.de
www.insiders-technologies.de



frogblue AG

Smart Building Technology

Revolutionary, easy, and affordable – that is the frogblue vision. Whether for your indoor or outdoor lighting control, automated shades, access and alarm systems, or complex logic functions for more comfort, security, and sustainable efficiency – frogblue lets you control them all with ease from a conventional light switch or a smartphone.

Frogblue is a young, dynamic company with around 50 employees located in Kaiserslautern. The founders are Dr. Ralf Hinkel and his son René Hinkel. René Hinkel is driving the technology of the smart boxes, so called Frogs as head of development and production, while Dr. Ralf Hinkel, as CEO, has more than 30 years of experience in the high-tech industry: as a visionary and innovative developer he has also founded Quadriga (1990, maker of leveling lasers) and MOBOTIX (1999, maker of smart networked came-

ras). The Hinkel family knows how to build a sustainable business from an innovative idea.

The company is VDE certified and is a member of ZVEI, ZVEH, the Smart Living Business Initiative, and the „SmartHome Initiative Deutschland“ and the German Design Council.

Frogblue provides smart home products based on Bluetooth® technology that are 100 percent develo-



ped and produced in Germany to the highest quality standards. The system is based on smart control components, so called „frogs,“ which are installed directly in the socket boxes behind the light switch.

The modular solution is quickly installed, can be extended at any time, and is energy efficient. No wiring, IT system, control box, or central device is required. Frogblue is designed for use in either existing or new buildings, from individual apartments to office buildings.

frogblue™

Competencies:

Smart Home easy and affordable – via Bluetooth®:

- No new cable
- Twice as safe
- No central device or Cloud
- from every light switch or smartphone
- Easy to install and expandable anytime

Contact:

frogblue AG
Luxemburger Straße 6
67657 Kaiserslautern
Telephone: +49 (0)631 520 829 0
E-Mail: info@frogblue.com
www.frogblue.com



Foto: A. Sell



Foto: A. Sell



Foto: Assyst GmbH

Human Solutions GmbH

Human-centric products

Formed in 2002, the Human Solutions Group is driving the digital transformation of product design in various industries with its software products and 3-D avatars. Today, the business group consists of three companies in Germany and two foreign subsidiaries. Our company location of choice: Kaiserslautern.

Many people have already benefited from the know-how of the three firms Human Solutions, Avalution, and Assyst because their IT products are found in the leading companies of the automobile and fashion industries. „Our RAMSIS standard software is a digital human model used for designing vehicle interiors. As a virtual test driver, RAMSIS ensures optimal accessibility and comfort in the vehicle“, said managing partner Dr. Andreas Seidl.

Since its formation, Human Solutions has developed and marketed software products that depend on the digital interplay between humans and the product. Around 200 employees work for the company group, 60 of them at the headquarters in Kaiserslautern. The newest group company Avalution was established in 2018 and is dedicated to the advanced development of body scanning technology and the use of avatars in product development for various industries. The Assyst company in Munich creates products for the digi-



Foto: A. Sell



Foto: Agentur view

tal transformation of the clothing industry, the centerpiece being the 3D-Vidya simulation software.

„As we acquired our Munich subsidiary in 2009, there was a brief discussion of whether a complete move to Munich would make more sense,” said Dr. Andreas Seidl. „But, we quickly decided on the Kaiserslautern location: Here, we have the right people, comfortable surroundings, and fast links to many important regions.“

Competencies:

- CAD-based IT products for all industries that depend on the interaction of humans and products
- Experts for body scanning and ergonomic problems
- Worldwide unique body mass database

 **HUMAN SOLUTIONS**

 **ASSYST**

 **AVALUTION**

Contact Kaiserslautern:

Human Solutions / Avalution / Assyst
 Europaallee 10 · 67657 Kaiserslautern
 Telephone: +49 (0)631 343 593 00
www.human-solutions.com
www.avalution.net
www.assyst.de



K-net Telekommunikation GmbH

Specialist for customized telecommunications products

K-net has specialized in customized telecommunications products in the greater Kaiserslautern business area for more than 20 years.

The majority of our customers are medium-sized enterprises that appreciate how we do not just talk, but actually communicate in every phase of the project. We consider two things to be indispensable for solving complex technical problems: (1) people with proper expertise and the ability to empathize and (2) good relationships with our users. These are why our technical support is available to you around the clock, 7 days a week.

Furthermore, to facilitate coordination, you will be supported by one and the same person in all matters. This adds a personal touch to every contact and prevents frictional informational loss.

As a regional network service provider that arose from the public utility company Technische Werke Kaiserslautern, we can rely on a mature infrastructure. Medium-sized companies, hospitals, administration centers, universities, banks, and insurance brokers all profit from our on-site product support. All-round concepts are customized to take local conditions into account, while at the same time, recognizing international standards in terms of speed, security, and viability. We secure cross-regional and national connections by coupling the net-



Berthold Willig, Geschäftsführer der K-net

work with other service providers. K-net launched the empera brand in August 2017. In a joint project with SWK (Stadtwerke Kaiserslautern), K-net is gradually expanding the fiber optics net in Kaiserslautern and facilitating the dawn of a new age of digital communication.

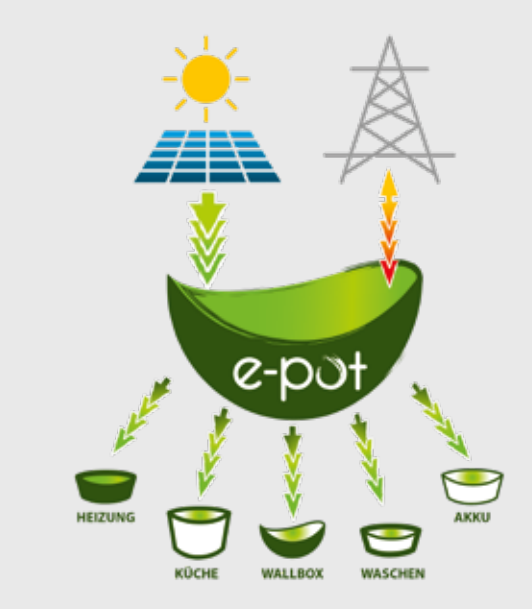


Competencies:

- Fiber optic & copper connections
- Landline connections, Dark fiber
- IP telephone connection, SIP trunk, IP-ISDN gateways
- TK systems
- Hotspot for your business
- Mobile communications
- Services and support

Contact:

K-net Telekommunikation GmbH
 Europaallee 10
 67657 Kaiserslautern
 Telephone: +49 (0)631 8001-6700
 E-Mail: info@k-net.de
www.k-net.de



kamaste.it GmbH

Namasté by kamaste

We are a successful IT service provider and support companies as they digitalize their business processes. Project management and software development are our daily business. Customers use our software products MM-print/400 and DocuWasher to reliably generate documents, labels, and barcodes. Our e-pot software is designed to manage energy consumption and optimize the CO₂ balance of your company. In this era of digital transformation, our work is more important than ever!

IT Compliance

- GoBD-compliant process documentation
- Implementation of legal data protection and data storage requirements
- EDI interfaces, electronic data exchange of structured, electronic business documents, in-depth knowledge of the processes in ERP systems

Output-Management-Systems

- Data hub between IT and functional departments
- Own software products prepare and distribute electronic or physical documents to recipients inside and outside the company
- Integration in the existing company IT

Energy management e-pot

- Efficient use of green energy and optimized CO₂ Balance

Our e-pot optimizes use of available energy and automatically adjusts the energy consumption of all devices. Preferably, self-generated energy is distributed in individual defined e-pots.

We provide e-pots so you can control individual processes and energy consumption flows. The e-pot portal prepares the statistics and presents a visualization of the calculations of supply feed, generation, and usage.



Softwareentwicklung,
IT-Projekte und Vertrieb GmbH

Competencies:

- IT compliant
- GoBD, EDI
- Programming
- IT project management
- Energy management

Contact:

kamaste.it
Softwareentwicklung, IT-Projekte
und Vertrieb GmbH
Habsburger Ring 31 · 67307 Göllheim
Telephone: +49 (0)6351 99999-0
E-Mail: info@kamaste.de
www.kamaste.de



matelso GmbH

Voice Matters - Call tracking for better marketing decisions

Matelso company has developed and marketed the latest systems for evaluating telephone calls for businesses, agencies, marketplaces, and portals since 2006.

The reasons the company relocated in 2014 from Stuttgart to Kaiserslautern, also home of the company's founder and CEO Frank G. Froux, were the good economic and scientific infrastructure it provides.

Above all, matelso benefits from the universities in Kaiserslautern with their priority on IT and training outstanding young talent. Many graduates have found their way to matelso and, through integration on major projects, are now an integral part of the team. The introduction and testing of new ideas and technologies on the marketplace is key for matelso as an innovation-driven company.

Matelso has been the leading call tracking supplier in the German speaking region for more than ten years. The use of professional call tracking products adds value to simple calls by providing exciting online marketing data with information about channels, campaigns, conversion value, and much more. Success is measured in a practical and meaningful way.

The data collected is immediately sent to an external analysis tool for evaluation. The bottom line: all incoming calls are precisely analyzed – with the goal of optimizing online campaigns.

Our technology is used by customers like Auto-scout24, Vodafone, and Nissan, all of which operate in a results-oriented environment. The top priority at matelso is to provide (online) marketing managers a better insight into their digital marketing activities to maximize their advertising success.



Competencies:

- Leading call tracking provider in Western Europe
- Technology available worldwide
- Insight into call-leads as a basis for better marketing performance
- 100% GDPR-compliant

Contact:

matelso GmbH
Standort Kaiserslautern
Stiftsplatz 5 · 67655 Kaiserslautern
Telephone: +49 (0)631 730680-0
E-Mail: business@matelso.com
www.matelso.com



Math2Market GmbH

Innovation through simulation

Computer-aided simulation at a micro and meso scale is a decisive breakthrough in materials research and materials development. More than 180 well-known companies and research institutes worldwide operate with GeoDict®.

Math2Market was founded as a spin-off by three members of the GeoDict® team at Fraunhofer ITWM in Kaiserslautern in 2011. The entrepreneurs began developing the software in 2001 and, with the help of their customers, have continuously expanded the functionalities of GeoDict®. Today, more than 40 people work at the Kaiserslautern site and the company is a world leader in the development of digital products for materials research and development.

GeoDict® simulation software integrates current research into powerful software development to create a user-friendly product that digitally maps the entire workflow for materials developers. The excellent image processing of 2-D or 3-D image data (μCT, FIB/SEM) with the help of artificial intelligence facilitates the precise characterization and analysis of the microstructure of the material. GeoDict® is capable of evaluating large, 3-D image data sets in a very short time and reliably predicts the material behavior under various conditions using simulation. The digital measurements are presented graphically and can be used in subsequent development processes.

Math2Market cooperates in many ways with international industry and research partners. Our team of highly qualified scientists and an international network of distribution partners provide reliable support to GeoDict® users in matters related to materials R&D, for example, intensive customer relations and a wide range of training courses.

For our international customers, GeoDict® represents an efficient alternative to complex test series and cost-intensive prototyping. Digitalization significantly accelerates the material design processes and non-destructive testing.

MATH
2 MARKET

Competencies:

- Powerful simulation products for
 - Filter media and elements, membranes, catalysts, gasoline and diesel particulate filters
 - Battery materials (cathodes, anodes, separators, etc.), fuel cells
 - Materials design and research
 - Digital rock physics and rock analysis

Contact:

Math2Market GmbH
Richard-Wagner-Straße 1
67655 Kaiserslautern
Telephone: +49 (0)631 205605-0
E-Mail: info@math2market.de
www.math2market.de



Mobotix AG

A pioneer on the global video security market

MOBOTIX is more than just a camera manufacturer: A MOBOTIX camera is a computer with eyes – Beyond Human Vision. MOBOTIX is a leading global manufacturer of premium quality, smart IP video systems and sets the standard for innovative camera technologies.

The distributed solutions from MOBOTIX meet the highest cyber security standards and are fully GDPR compliant. MOBOTIX was founded in 1999 and is headquartered in Langmeil, Rhineland-Palatinate.

The company relies on its own research and development as well as its own production, proudly 'Made in Germany'.

Sales offices worldwide – in New York, Dubai, Sydney, Paris, and Madrid – serve the demand for high-end-video systems.

Customers all over the world trust the durability and reliability of the hardware and software from MOBOTIX. This is why MOBOTIX is the camera of choice at the German Neumayer-Station in the Antarctic as well as



*Executive Board of Mobotix AG l-r:
Thomas Lausten, CEO / Klaus Kiener, CFO / Hartmut Sprave, CTO*

for wildlife conservation purposes in hot Australia. Our cameras supply scientific data from Mount Everest and protect students and school children on American schoolyards and campuses.

Many industries appreciate the flexibility of our products, with integrated intelligence and the highest level of data security. Customers in logistics, industrial manufacturing, the retail trade, or education and healthcare have chosen MOBOTIX products and solutions.

Through the use of artificial intelligence and deep learning modules as well as strong and international technology partnerships, the company is expanding its universal platform and building new use cases in a variety of fields.

MOBOTIX

BeyondHumanVision

Competencies:

- Video surveillance and video security
- Indoor, outdoor, and thermal cameras
- Video management systems and cloud solutions
- Cyber security / GDPR-compliant / SySS certified

Contact:

MOBOTIX AG
Kaiserstrasse
67722 Langmeil
Telephone: +49 (0)6302 9816-0
E-Mail: info@mobotix.com
www.mobotix.com



MiniTec Smart Solutions GmbH

Assistance software for innovative manufacturing firms

The interactive assistance system from MiniTec Smart Solutions supports employees in carrying out manual tasks in manufacturing, packaging, quality assurance, as well as training and further education.

The use of innovative technologies is an essential factor for a sustainable competitive manufacturing activity. Assistance systems use intelligent technologies to support people – the vital core of production.

The assistance system from MiniTec Smart Solutions is designed for the workers in a manufacturing environment who perform the manual tasks at a certain level of complexity. The software uses sensors to detect the status of the product in question and compares this data with internal process descriptions. In parallel, the system visualizes a corresponding step-by-step instruction using a mobile or stationary Augmented Reality and provides appropriate additional information. The software helps people carry out assembly tasks safely and efficiently, in particular, with multi-variant products.

In addition to the visualization of task instructions, the software works well for quality assurance and training purposes. Particularly in the context of quickly changing

requirements, employees can use the assistance software to quickly familiarize with new products and processes and stay competitive through lifelong learning.

The modular architecture ensures that the assistance system is suitable for a wide range of use cases and company-specific solutions. The integration of individual components into an existing production system is just as easy as providing an integrated solution. MiniTec Smart Solutions is a subsidiary of MiniTec & Co., and benefits from many years of expertise in the design of ergonomic manual workstations for innovative production plants.

MiniTec
SMART SOLUTIONS

Competencies:

- Assistance systems for manual tasks, quality assurance, and training
- Integrated solutions for innovative manual workstations
- Digitalization through Human-Computer-Interaction (HCI)
- Industrie 4.0 work stations with Augmented Reality (AR)

Contact:

MiniTec Smart Solutions GmbH
Zollamtstraße 11
67663 Kaiserslautern
Telephone: +49 (0)6373 8127-353
E-Mail: info@mss-digital.de
www.mss-digital.de



OSSENO Software GmbH

Intelligent assistance for more successful projects

OSSENO Software is based in Kaiserslautern and is a highly specialized supplier of requirements and information management software and services. The company is committed to the goal of using smart products to facilitate and increase the effectiveness and efficiency of tasks involving the development and procurement of products, systems, and software

Information and requirements are the starting point for every project. Decisions cannot be made on a sound basis without knowing what is actually required with regard to commercial and technical issues. The complexity of modern systems increases the difficulty in maintaining the necessary overview. No wonder that about 70% of all projects exceed their planned budget or schedule.

The „ReqSuite®“ software and associated consulting services from OSSENO Software enables companies to better manage project data and requirements thanks to smart and convenient assistance. Right from the start, typical problems like costly project rework or new negotiations can be reduced or eliminated.

The company was founded by three former Fraunhofer scientists in 2015 and combines many years

of industry and consulting experience with methodological expertise from many years of cutting edge research.

OSSENO Software products provide cross-industry advantages; our customer base includes both large corporations like Deutsche Bahn as well as a number of Mittelstand companies (SMEs) from a variety of sectors.



Competencies:

- Cross sector solutions for requirements and information management
- Requirements Engineering
- Software development
- Process and methods consulting

Contact:

OSSENO Software GmbH
Finstersichel 8
67659 Kaiserslautern
Telephone: +49 631 62798650
E-Mail: info@osseno.de
www.osseno.com



Nagarro ES – Standort Pirmasens

Partner for the digital transformation

Nagarro Group has a global presence with more than 8,500 employees and is listed on the German stock exchange. Nagarro ES automates the German Mittelstand (SMEs), schools, and municipalities and supports them as they implement the digital transformation.

Nagarro ES advises the German Mittelstand and major international corporations on IT strategies and process issues. The company implements and operates systems to include the associated support and maintenance services. In addition to years of SAP experience in core cross-industry processes, Nagarro ES has formidable and specific expertise in the commercial trades, process and manufacturing industries, professional services, and municipal sectors.

Nagarro ES is always unbiased in its approach and supports its customers on-site, in the cloud, or in hybrid scenarios. Nagarro ES also sells its own proprietary products designed to increase efficiency. The extensive expertise of Nagarro ES employees in an SAP environment is not just tangibly seen in the work carried out directly at the customer site, but it has also been certified: Nagarro ES is an SAP Gold Partner, SAP Cloud Focus Partner, and the first partner worldwide awarded the SAP Recognized Expertise for SAP S/4HANA Cloud.



Nagarro ES offers its customers not only international reach by way of its association with the Nagarro Group, but also access to the additional technologies of a global player in software engineering. More than 50 employees work at the historic Rheinberger Building, a landmark in the city of Pirmasens. Formerly a shoe factory, it now serves as a symbol of the city in its transformation into the future.



nagarro **ES**
Fit for the Digital Age

Competencies:

- IT Modernization & Outsourcing
- Cloud products for complex IT environments
- Managed Services
- SAP projects and SAP add-ons: Planning, rollout, and support
- Transformation to S/4HANA On-Prem or Cloud
- SAP add-ons for increased productivity

Contact:

Nagarro ES
Fröhnstr. 2
66954 Pirmasens
Telephone: +49 (0) 6331 202 99 48
E-Mail: info@nagarro-es.com
www.nagarro-es.com

Business management from one source



proALPHA

Digital – Solid – Reliable

proALPHA has been satisfying clients for more than 25 years with software products that truly move them forward. Besides SMEs from the manufacturing and retail sectors, the proALPHA Group supports users from various other sectors.

Every day, around 1,200 employees help 4,500 clients around the world to progress further with their digital transformation. The powerful, integrated ERP solution forms the digital backbone by networking and controlling systems and processes along the entire value chain.

Additional products, for example, access control, production and machine data capture, data analysis, and even products from certified partners can be directly linked.

More than software

Whether mobile offices, international supply chains, or predictive maintenance: proALPHA is the answer. From software to consulting and training to service and maintenance, on-premises or from the Cloud – proALPHA is supporting companies as they move forward with digitalization.

Designing the digital world

proALPHA actively promotes the development of digitalization and the Internet of Things – for example,



through cooperative agreements with SmartFactoryKL, Smart Electronic Factory, and the Center for Enterprise Resource Planning (CERP) on the RWTH Aachen campus. This supports the creation of new products that our users can put to practical use.

Developing perspectives

proALPHA offers many career perspectives for employees: at our headquarters in Weilerbach, our Kaiserslautern location, and our other offices around Germany and abroad, whether in software development or consulting... You benefit from the first day onwards:

starting with a professional introductory training concept to a company-wide benefits package to individual personal development strategies, for example, at our in-house training academy.

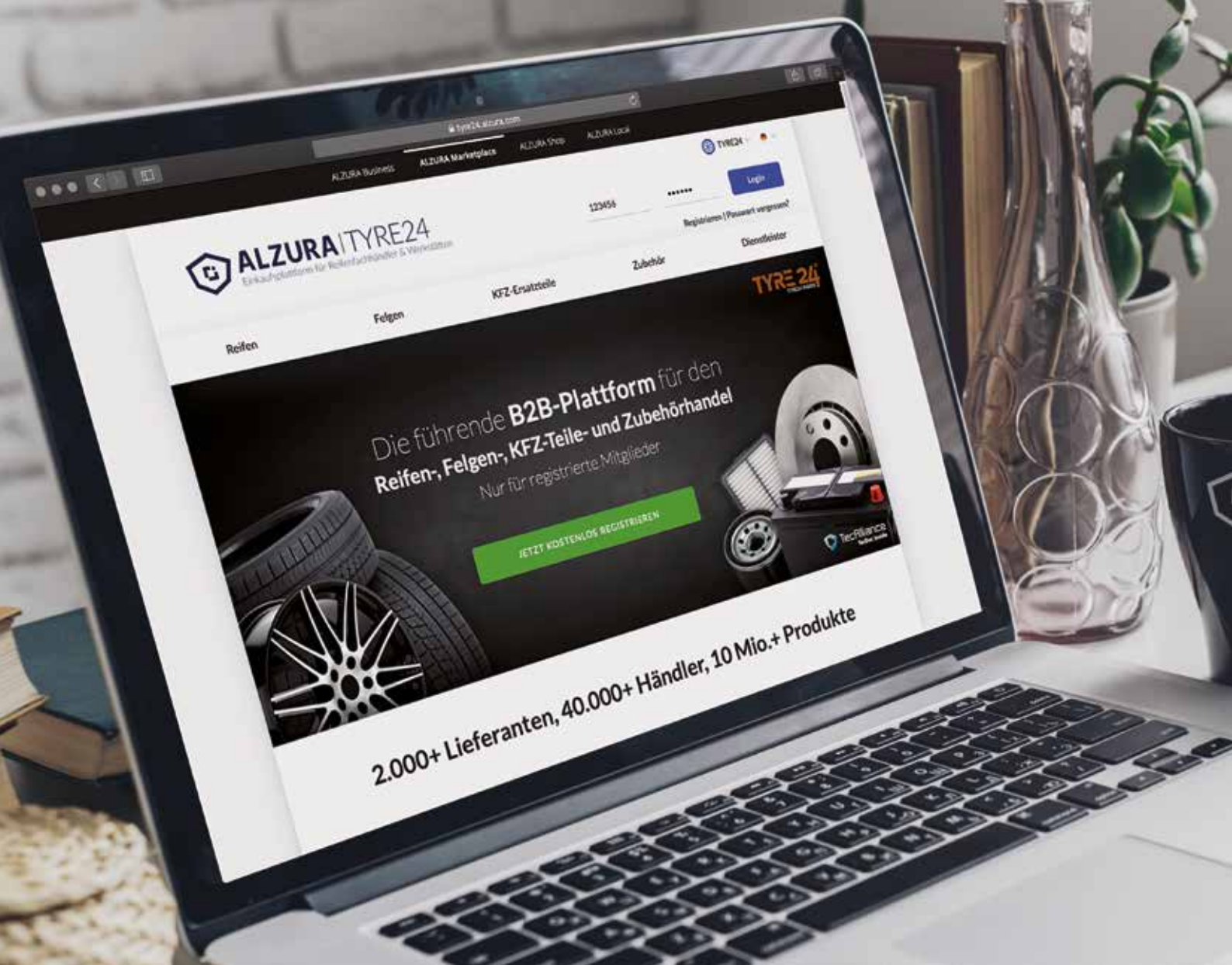
PRO ALPHA

Competencies:

Just the right processes, well-founded advice, and proven, industry-specific products for the digital transformation of the Mittelstand companies (SMEs).

Contact:

proALPHA
Auf dem Immel 6
67685 Weilerbach
Telephone: +49 (0)6374 800-0
E-Mail: info@proalpha.com
www.proalpha.com



Saitow AG

Online solutions for wholesalers and retailers

SAITOW is an international eCommerce company with 300 employees at multiple European locations. The core business is the production, sale, and operation of eCommerce systems.

The company designs software, web apps and online platforms that have been among the most successful in the industry for nearly 20 years. SAITOW develops Alzura.com, one of the largest industry-specific B2B platforms in Europe.

Tyre24.alzura.com site focuses on the automotive sector. The Tyre24 platform represents the automobile after market for tires, rims, spare parts, and accessories.

As the leading B2B platform for the parts trade, Tyre24 links 2,000 suppliers with 40,000 potential buyers in nine European countries and is responsible for an annual trade volume of approximately 1 billion euros.

Every day, up to 100,000 orders are transacted via the portal. The aim of Tyre24 is to provide established market participants a platform that enables



them to reach their target group easily and with attractive sales commissions, while expanding their market reach. The sites „Autoreparaturen.de“ and „Reifen-vor-Ort.de“ were created by SAITOW as on-line business models to enable auto service shops to participate in the B2C market and enlarge their customer base. Another business segment is the ALZURA Shop, which provides store and web site solutions for any industry and every size enterprise.

The company also markets ALZURA Local an app for retailers and service providers. The app enables them to successfully market their own products or

services with special discounts and advertisements online, not just in-store.



SOFTWARE | BUSINESS | ENGINEERING

SAITOWAG

Competencies:

- Development, sales, and operation of eCommerce systems
- Several projects among the Top 10 selling eCommerce brands in Germany
- Operator of Tyre24, the leading B2B platform for the automotive after market

Contact:

SAITOW AG
Gewerbegebiet Sauerwiesen 2
Technologie-Park I & II
67661 Kaiserslautern
Telephone: +49 (0)6301 600 2000
E-Mail: info@saitow.ag
www.saitow.ag



teckpro AG

Innovative success through combined strengths

The teckpro company has developed innovative financial mathematical software products for the insurance industry nationwide for more than 20 years. The primary focuses is on computer science, mathematics, and also, increasingly, artificial intelligence.

Teckpro stands for sustainability, partnership, and innovation in the financial sector – whether for insurance companies, banks, tax and business consultants, associations, brokers, or financial sales organizations. The company, headquartered in Kaiserslautern, develops financial mathematical software products. Michael Littig, executive manager of teckpro, decided to start his own business in 1999. He continues to lead the family business, which has grown steadily over the years, gradually working its way to the top in the industry. On July 1, 2020, Frank Stuch joined the executive management board.

The company activity is focused on the development of platforms and complex portal solutions, analysis and consulting products for private and corporate customers as well as underwriting platforms and innovative mobile AI solutions. Teckpro, with this product portfolio, is now a leading software supplier and consulting company for Germany's financial sector. Teckpro applications are used by more than 100,000 users nation-wide - from Kiel to Munich.

Important in this success, besides our motivated team of approximately 50-members composed of computer scientists, mathematicians, and business economists, are our partnership and collaboration with local research institutes, like the German Research Center for Artificial Intelligence (DFKI), Kaiserslautern University of Technology, and the European Institute for Quality Management of Financial Mathematic Products and Processes (EI-QFM) and their spin-off companies.

In 2019, the company celebrated its 20th anniversary with a jubilee event at the Fritz Walter Stadium on the Betzenberg. Long standing partners and friends were invited to an evening event following the trade congress. At the event, Michael Littig emphasized the teckpro intent to continue to bundle the expertise in the West Palatinate, adding that Kaiserslautern is the ideal location to support the further growth of the company.

teckpro

Competencies:

- Software development and implementation
- In-house and 3d party software
- Business consulting
- Consulting services for information technologies
- Testing and implementation of AI solutions

Contact:

teckpro AG
Spitalstraße 19–21
67659 Kaiserslautern
Telephone: +49 631 414 17 – 0
E-Mail: office@teckpro.de
www.teckpro.de



TOPdesk Deutschland GmbH

Service management made easy

TOPdesk software and consulting provides a service and support solution for all business units such as IT, facility, or HR and helps them to achieve their goal: satisfied customers through excellent service management.

TOPdesk is an international company in the field of Enterprise Service Management software with headquarters in Delft, The Netherlands. TOPdesk is a leading European supplier with more than 800 employees worldwide at 15 locations and more than 4,000 customers in more than 45 countries. The company headquarters for the German speaking region is in Kaiserslautern, with a staff of more than 100 people who support the entire region. It was established as the first office located outside of the The Netherlands in 2004.

TOPdesk software is 100% web-based, available as SaaS or as a local installation, and characterized by its user-friendly operation. TOPdesk is primarily for IT departments and Helpdesks to assist their employees and customers while taking care of the service processes of the organization. A large selection of optional modules is available that easily combine to form a Shared-Services-Center – regardless of whether requests are made to IT, facility management, or HR department – all areas of service management are covered by our software. This is how we help our cus-

tomers to improve communication and coordination of the workflows and take control of the flood of inquiries, significantly improving customer satisfaction. Using modern methods like self-service and knowledge management, our dedicated team in Kaiserslautern stands by our customers during every phase. All of our services, from sale and fast implementation to consulting and support, are fully performed by our internal staff – without partners.

Although our customers represent all industries and sectors, TOPdesk is particularly popular with the Mittelstand companies (SMEs) because it is an easy to use and administer as a standard tool.



Competencies:

- Software and consulting for excellent IT, Facility and HR service management
- SaaS or a locally installed variant
- Quickly installed and easy to use
- Seamless linking with third party systems
- Guided by best practices

Contact:

TOPdesk Deutschland GmbH
Hertelsbrunnenring 24
67657 Kaiserslautern
Telephone: +49 (0)631 62400-0
E-Mail: info@topdesk.de
www.topdesk.de



**Universities, Institutes,
& Networks**



German Research Center for Artificial Intelligence (DFKI)

Human-centric AI – Smart solutions for the knowledge society

Innovative software based on artificial intelligence technologies.

DFKI is the leading, commercially oriented research center in Germany in the field of innovative software based on the methods of artificial intelligence. DFKI projects address the entire spectrum from application oriented basic research to market and customer-oriented development of product functions. The range of services includes technology transfer of internationally recognized research findings, market studies, expert audits, and feasibility studies. Other services are implementation, maintenance and support for DFKI AI solutions and their scientific evaluation.

In Kaiserslautern, DFKI applies its broad knowledge of the methodologies and its unique AI hardware setup to assist well-known companies to organize industry-specific transfer labs. In the last three years alone, various such labs were created (Allianz, Continental, Hitachi, IAV, and Sartorius), which all together have developed innovative AI service modules for diverse markets and target groups.

In addition to the federal states which host DFKI offices, the DFKI Supervisory Board also includes numerous familiar names of German and international high-tech companies from a wide range of industries. Three internationally known companies joined the ranks of DFKI

shareholders alone in 2020: NVIDIA, the global market leader in computer graphics and AI computing, Bilfinger Digital Next, a subsidiary of the international provider of industrial services, and ROSEN Group, a globally active technology group. In March 2020, DFKI established a branch office at the University of Trier.

Working at DFKI acts as a step on the career ladder for young scientists entering leadership positions in industry and for entrepreneurs founding their own spin-off companies. Over the years, more than 140 employees have been appointed as professors to chairs at universities and colleges in Germany and abroad.



**Deutsches
Forschungszentrum
für Künstliche
Intelligenz GmbH**

DFKI research units in Kaiserslautern:

- Smart Data & Knowledge Services
- Embedded Intelligence
- Innovative Factory Systems
- Intelligent Networks
- Augmented Vision

Contact:

Deutsches Forschungszentrum für
Künstliche Intelligenz GmbH (DFKI)
Trippstadter Str. 122 · 67663 Kaiserslautern
Telephone: +49 (0)631 20575-0
E-Mail: uk-kl@dfki.de
www.dfki.de



Fraunhofer-Institute for Experimental Software Engineering IESE

Digital ecosystems for the mobility of tomorrow

Digital ecosystems and digital platforms are changing the economy and society in many ways. They offer companies disruptive opportunities through the use of new digital business models.

Fraunhofer IESE is the leading institute for innovative systems- and software engineering. The primary aim of Fraunhofer IESE is to support companies from Germany and Europe in establishing successful digital ecosystems with a focus is on the quality aspects of systems.

In recent years, digital ecosystems like Airbnb, Uber, and Amazon have drastically reshaped our economy in just a short period of time. At the center of a digital

ecosystem is a digital platform, which supports excellent cooperation among all participants. The success of a digital ecosystem can be measured by the number of participants and the networking effects created by their interactions.

Digital ecosystems promise the participants the following features: enormous design freedom, a chance at disruptive positioning and greater influence, simplicity through harmonization, and a very pleasant user ex-



perience, easy entry accessible to many participants, great growth potential, and high scalability.

Digital ecosystems are currently creating these opportunities in many domains. The mobility and automotive industries are traditionally of great importance to Germany. Some of the sub-sectors have already been successfully occupied, e.g. by international companies like Uber and Lift, but also by some German companies like Flixbus. Many other areas have not yet been successfully occupied and offer the chance for additional digital ecosystems. Even some of the less prominent companies in the supply chain can take a more influential position. However, the key factor in getting established is the speed at which it is achieved.

Fraunhofer IESE supports companies from the initial ideas to the establishment of the digital ecosystems and from strategic positioning to technical implementation.



Expertise for digital ecosystems:

- Strategy definition
- Concept definition and design
- Development of platforms and services
- Company organizational structures
- Partner networks and communities

Contact:

Fraunhofer-Institut für
Experimentelles Software Engineering IESE
Fraunhofer-Platz 1 · 67663 Kaiserslautern
Telephone: +49(0)631 6800 1700
E-Mail: simone.mieger@iese.fraunhofer.de
www.iese.fraunhofer.de



Entering the digital era with mathematics

Fraunhofer-Institute for Industrial Mathematics, ITWM is the largest institute for applied research in Rhineland-Palatinate: The staff of 500 is working to solve technical challenges using simulation and software-based methodologies .



Problem solving by way of simulation is now key in all industrial sectors. Without their own research department, many small and medium sized companies choose to use the simulation and software expertise of Fraunhofer ITWM in their effort to increase competitiveness.

The expertise is present in all departments of the ITWM; However, it is primarily the Competence Center for High Performance Computing that deals with the efficient processing and visualization of large volumes of data and uses Machine Learning (ML) methods when doing so. Above all else, the computer scientists here are focused on Deep Learning (DL).

Next Level: Quantum computing

Problems that are too computationally complex, even for high performance parallel computers, could be solved by quantum computing in the future. The Fraunhofer-Gesellschaft is convinced about that: in mid-2020, ITWM teamed with the state of Rhineland Palatinate to establish the Fraunhofer Competence Center for „Quantum High Performance Computing.“

The primary aim is to ensure an application-focus is observed in the new technology. A working group is already performing calculations on IBM quantum computers in the USA.

Networked expertise on the site

One component of the unique IT research and digital technology infrastructure in the West Palatinate is the High Performance Center for „Simulation- and Software-Based Innovation“ which is managed by Fraunhofer ITWM. It provides structure and stability to the regional networks of science and business, especially, in the fields of „Big Data Analysis and High Performance Computing“, „Digital Commercial Vehicle Technologies“, and „Smart Ecosystems.“ The training and support of young scientists is also included among the center's responsibilities.



Competencies:

- High Performance Computing
- Data Analysis and Machine Learning
- Deep Learning
- Scalable parallel programming
- Development of use cases for quantum computing
- Modeling, simulation, and optimization

Contact:

Fraunhofer-Institut
für Techno- und Wirtschaftsmathematik ITWM
Fraunhofer-Platz 1 · 67663 Kaiserslautern
Telephone: +49(0)631 31600-4674
E-Mail: presse@itwm.fraunhofer.de
www.itwm.fraunhofer.de



Hochschule Kaiserslautern - University of Applied Sciences

Innovative teaching and learning – vision, design, & development in the „connected age“

As an institute of higher education for applied sciences, we are an interface between industry, technology, and research. A targeted and cooperative teaching style, with roots firmly grounded in the region, consistently produces highly qualified academics for the jobs of today and tomorrow.

Technical issues in science and business are increasingly complex due in no small part to the ongoing digitalization in all areas of life. Teaching and research activities at the Kaiserslautern University of Applied Sciences are finding effective, application-oriented, and forward looking answers. Computer Science is offered as a major course of study, but it is also an integral part of the curriculum in all disciplines as it figures prominently as an integrating, cross-sectional competence in all of our subject areas: health, technology, design, and economics. Work projects inspire and encourage students to apply their acquired know-how and participate in the rapid design and development of the era of networking.

Our focus on the needs of business and society is supported by flexible, well-grounded, practical study formats in addition to our activities in the areas of knowledge and technology transfer. Together with approximately 200 partner companies, we are a powerful engine in the region, realizing our visions of diversity, responsibility, and networking.

Core competence in the fields of computer science and information systems is evident in numerous, sometimes highly specialized, R&D activities. The aim of one major research area,

Reliable Software-Intensive Systems, is to develop technical and organizational systems such as medical devices, computer aided business processes, ambient assisted living & mobility systems, as well as Industrie 4.0 production systems. The HCI2B Working Group prepares empirical analyses of Human-Machine-Interaction and the human-centric design, implementation, and evaluation of interactive systems. Together with scientists, students develop innovative software frameworks for simulations, operating concepts, and user interfaces with a focus on the automotive industry.

Another major research area is Highly Efficient Technical Systems, which focuses on the optimization of complex, networked systems solutions. Experts from the fields of computer science, electrical-, and mechanical engineering develop innovative ideas from the initial theory to the final product and system integration.



Competencies:

- Human-Computer-Interaction, User Interfaces & Usability
- Software-intensive systems
- Process controls, Automation & Ambient Assistance
- Software Engineering & Databases
- System Analysis / Business Modeling
- Embedded Systems and Operating Systems

Contact:

Hochschule Kaiserslautern
University of Applied Sciences
Schoenstraße 11 · 67659 Kaiserslautern
Telephone: +49 (0)631 3724 – 0
E-Mail: presse@hs-kl.de
www.hs-kl.de



IT-Sicherheitsinitiative Kaiserslautern

Cyber security in the digital age

The Kaiserslautern IT Security Initiative was established in 2005 as an association of companies located in the greater Kaiserslautern area. The main goal of the initiative is to promote the vital importance of IT security and to show possible solutions.

The rapid advances in IT application development in recent years, the unavoidable growing reliance on functioning IT systems, and the broad deployment of E-Commerce software all combine to give greater importance to IT security concerns. The security of information systems is essential to the success of companies, institutions, and public offices. The loss of critical business data can seriously threaten the continued existence of even a successful company.

The IT Security Initiative bundles the existing regional expertise in the area of IT security. This expertise ranges from special services in the areas of IT laws and insurance to individual services for the installation of suitable system solutions, security applications, and data recovery. The West Palatinate is not only a leader in the areas of IT and digitalization, but also a pioneer in IT security. A special feature of the initiative: although companies are sometimes in competition with one another, they continue to work together in a spirit of trust. They are united by the conviction that more can be achieved through cooperation.

The IT Security Initiative organizes the annual IT Security Day and various info events focusing on current issues such as the GDPR (General Data Protection Regulation) to promote the transfer of new findings to business practice; also, providing opportunities for IT companies to share their experiences with medium-sized companies and public authorities increasingly affected by digitalization.



Competencies:

- Data security (enbiz)
- IT service and management (klip asca)
- Network solutions (Schwarz IT)
- Data recovery (CBL)
- Security systems (Heinz Port)
- IP video solutions (Schirra IT)
- IT Law (K&K Law Offices)
- IT Insurance (Weißmann)

Contact:

klip-asca GmbH · Manuel Neubecker
 Gersweilerweg 2
 67657 Kaiserslautern
 Telephone: 0631-34130-0
 Telefax: 0631-34130-10
 E-Mail: info@klip-asca.de
 Internet: www.klip-asca.de



Foto: Agentur View/KL.digital GmbH

Our City – Digital at Heart

Smart city with a focus on people

Digital at Heart – refers to the city of Kaiserslautern following Bitkom’s „Digital City“ competition in 2017. As a pilot city for the digital transformation, we have a leading role in Rhineland Palatinate and we are one of 13 cities and municipalities selected to participate in the Federal project „Pilot Region Smart Cities: Urban Development and Digitalization“ since 2020.

The city government established staff position Digitalization (I.8) in June 2020, to team up with city affiliate KL.digital and work on a number of projects and to promote Kaiserslautern’s image as a Smart City. Also, the city’s administrative staff is involved in project implementation and in the digitalization process.

Funding for the pilot project Smart Cities is provided by the Federal Ministry of the Interior, Building, and

Community and at the state level by the Ministry of the Interior and Sport.

Why „Digital at Heart“? Because after all, the focus is on people. At various events (e.g., resident’s meeting on Smart City and 5G), we record every input to ensure that all new approaches will, in fact, add value for the people. We engage in direct exchange through active networking, state-wide and beyond, like the Interkommunale Netzwerk Digitale Stadt (IKONE DS). We are also a proud



Foto: Angelika Stehle/KLdigital GmbH



member of the ZukunftsRegion Westpfalz, which not only thinks about future planning, but also guides major projects to fruition.

The networks and close contact to the people produces innovative approaches that frequently lead to showcase projects. One example: The „cultural live-streaming“ from the Fruchthalle cultural center received an enormously popular response. Working with the cultural affairs office, the collaborative format presents audiences with entertainment and emotional events for home viewing. We readily share tested and proven expertise with others to facilitate live-streaming in other communities. This, after all, is „Digital at Heart.“



Competencies:

- Digital at Heart network
- Cooperation with DFKI
- First city with a chief digital officer and chief urban officer
- Role model as pilot city
- Digitalization of administrative function

Contact:

Unser Lautern – herzlich digital
www.herzlich-digital.de
info@kl.digital
info.digitalisierung@kaiserslautern.de



Technical University of Kaiserslautern

Driving digitalization

TU Kaiserslautern's (TUK) teaching and research priority is on the technical and natural sciences, which enables it to focus on the major challenges of regional economies – both within Germany as well as in global collaborative ventures. It enjoys a highly respected international reputation as a campus university with nearby research institutes. TUK is organized in 12 departments that present about 100 courses of study. Kaiserslautern, a center of education and research, is also one of the largest IT „clusters“ in Europe.

TUK is continuously expanding its research focus: on intelligent software tools, Industrie 4.0, virtual reality and augmented vision, new artificial intelligence methods and applications, to robotics and autonomous driving – all areas driving the digital transformation of the economy and society. Currently, with six collaborative research centers and many interdisciplinary projects, TUK pursues economic excellence by addressing practical problems.

It has taken a leading role in the German and international research landscape, as evidenced by many collaborative agreements with small and medium sized partners in the region and with global players in Germany and abroad.

Numerous institutes that are located on campus and the adjacent research mile extend our research portfolio and act as catalysts for knowledge transfer.



Foto: © TUK/Thomas Jöber

TUK is a key engine for innovative start-ups and has already produced several „hidden champions.“ The award-winning start-up office is the central contact point for establishing new companies with innovative ideas.

TUK is constantly expanding its circle of partnerships and is proud to work with you on the challenges of tomorrow.



Competencies:

- Embedded systems
- Intelligent, distributed information systems
- 5G technology
- Industrie 4.0
- Artificial Intelligence, robotics, & autonomous driving
- Simulation and visualization
- Augmented and Virtual Reality (AR/VR)
- Internet of Things

Contact:

Technische Universität Kaiserslautern
Referat Technologie und Innovation
Postfach 3049
67653 Kaiserslautern
Telephone: +49 (0)631 205-3001
E-Mail: post@rti.uni-kl.de
www.rti.uni-kl.de



Science and Innovation Alliance Kaiserslautern

Efficient transfer between science and industry

A network for digital transformation, future innovation, and interdisciplinary cutting-edge research in Kaiserslautern, a center of science and technology.

New achievements in information technology are constantly changing our professional and private lives. Solving the complex scientific and technological problems demands an interdisciplinary approach. The Science and Innovation Alliance Kaiserslautern (SIAC) is the leading network for educational and research institutes as well as high-tech business enterprises in and around the science and technology center Kaiserslautern. SIAC members, through excellence in research and practice in various fields,

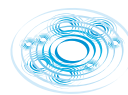
promote a comprehensive transfer between science and business. This is reflected in many activities and collaborations, for example, the collaborative project „Infra-Bau 4.0: a dynamic, semi-automatic reprogramming of infrastructure construction projects.“ Initiated by SIAC, it involves a number of well-known research institutes, to include Fraunhofer-Institute for Experimental Software Engineering (IESE), Technical University of Kaiserslautern (TUK), and Fraunhofer-Institute for Industrial Mathematics



(ITWM) in addition to a number of well-established companies (e.g., Drees & Sommer, Cranimax). Together we are advancing the common goal of driving the digital transformation at infrastructure construction sites (i.e., street, rail, and bridge projects). We help to create a technical environment that enables the networking and interoperability of systems and data linked to the construction sites. Funding for this major project is provided by the Federal Ministry of Transportation and Digital Infrastructure (BMVI) in an amount of more than 4 million euros.

SIAK, together with TU Kaiserslautern, also awards a „Digital Transformation Certification.“ It is open to Master's degree candidates from various disciplines

who wish to broaden their understanding and skills in the field of digital technology. It presents interdisciplinary knowledge for the analysis and interpretation of data from various disciplines. The aim is to ensure that students are fit for tomorrow's job markets.



SIAK

SCIENCE & INNOVATION
ALLIANCE KAISERSLAUTERN

Expertise Transfer:

- Contact and exchange platform
- Knowledge and technology transfer
- Preparation of digital business models
- Information distribution on innovative topics
- Collaborative research projects between science and business

Contact:

Science and Innovation Alliance Kaiserslautern e.V.
Paul-Ehrlich-Str. Geb. 32, 416
67663 Kaiserslautern
Telephone: +49(0)631 205-4472
E-Mail: info@science-alliance.de
www.science-alliance.de

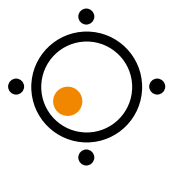


**ZukunftsRegion
Westpfalz**

ZukunftsRegion Westpfalz (Future Region West Palatinate) is a regional initiative committed to the goal of bundling the resources of the West Palatinate to carry out joint projects and, in this way, strengthen the future viability of the region. Supported by the Palatinate Chamber of Industry and Commerce (IHK) and the state government, the association has grown to more than 350 members from business, science, government, and civil organizations in just a few years.

www.zukunftsregion-westpfalz.de





**ZukunftsRegion
Westpfalz**

Future-oriented study programs, practical training, a modern infrastructure, and a large number of globally operating companies – these are the framework conditions present in the West Palatinate.

A traditionally industrial region, in recent decades it has developed into an important high-tech center that presents ideal conditions for further growth. A dynamic IT cluster of international importance has developed around our universities and research institutes.

This brochure presents the regional network of high performance companies and innovative research institutes, whose expertise is tightly intertwined. On these pages, entrepreneurs and investors seeking a suitable environment for their investments will find the ideal business contacts.



Supported by:



Rheinland-Pfalz

MINISTERIUM FÜR
WIRTSCHAFT, VERKEHR,
LANDWIRTSCHAFT
UND WEINBAU

ZukunftsRegion Westpfalz e.V.

Bahnhofstraße 26–28 · 67655 Kaiserslautern · Telephone +49 631 20560110

E-Mail: info@zukunftsregion-westpfalz.de · Web: www.zukunftsregion-westpfalz.de